



CONSULTING ENGINEERS



RAIL DRAINAGE DESIGN SIDCUP, KENT



Brief

Riddwood Consulting Engineers were engaged by UKDN Waterflow (LG Group) to provide a design for the renewal of an existing drainage design near Minster Station, Kent.

Client Feedback

Riddwood delivered a design which met with strict compliance guideline whilst remaining as easy to implement as possible. A collaborative approach to design delivered with a highly professional service means UKDN Waterflow (LG) were able to construct the scheme efficiently.

Jim Barnett,
Senior Project Manager,
UKDN Waterflow (LG Group)

Engineering ideas into reality.

RIDDWOOD
CONSULTING ENGINEERS



Design Process

Riddwood Consulting Engineers designed a drainage renewal scheme for the defective system which was in existence. From the initial survey we were able to produce a scheme design for the location of catch-pits (man-holes) and the exact depth of drainage pipes. Using this information, the Riddwood designer was able to prescribe gradients for the drainage system to ensure the hydraulic compliance of the system, which includes the drainage being completely self-cleansing.

We utilised the virtual data in existence on the Virtual Site Visit (ViSiVi) interface along with the GNSS survey and the CCTV survey.

The Project was developed using Tekla TEDDS, Microsoft Excel and AutoCAD 2017.

Design Codes Used

- NR/L2/CIV/003
- NR/L2/CIV/005
- GI/RT7008
- GI/RT7003
- GC/RT5203
- GM/RT/1040
- NR/SP/BUS/011
- NR/SP/CIV/044
- NR/L2/INI/2009
- NR/L2/TRK/2102



Figure 1



Figure 2

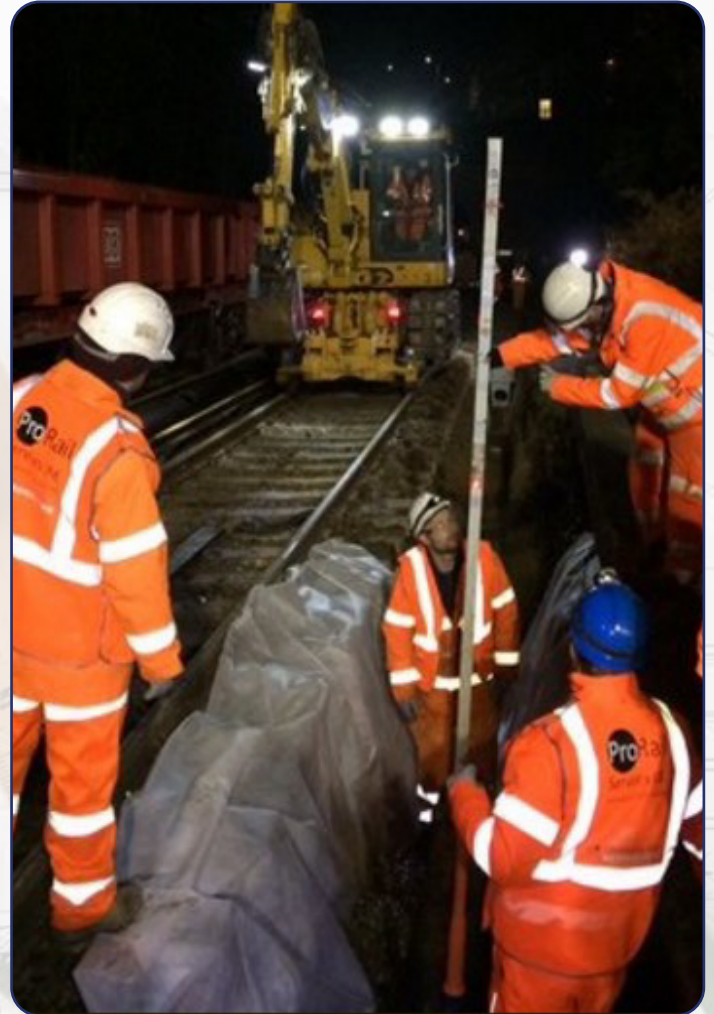


Figure 3 • General Plan

